

Temporary Crown & Bridge Material



Fig. 1



Fig. 2

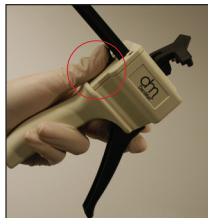


Fig. 3



Fig. 4



Fig. 5

Step 1: Removing the 4:1 conversion slide

- Confirm dispensing gun is part# DS50 4:1/10:1 (fig.1-part# located on side of gun)
- Prop open top of dispensing gun (fig.2)
- Push up and hold the lever at the back of the dispensing gun (fig.3)
- Push the back of the 4:1 slide away from you and pull out completely from other side (fig.4,5).

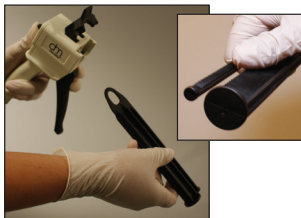


Fig. 6



Fig. 7

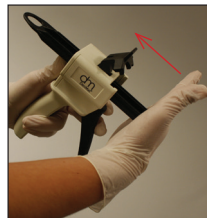


Fig. 8



Fig. 9

Step 2: Insertion of 10:1 conversion slide

- Line up the 10:1 conversion slide (part # PLS 050-10 10:1) accordingly with the dispensing gun (fig.6).
- Push up and hold the lever at the back of the dispensing gun while inserting the new conversion slide into the dispensing gun (fig.7,8,9)