

## CASE STUDY

# Squamous cell carcinoma

**Patient:** 62-year-old male, moderate tobacco use

**Situation:**

After prophylaxis, the patient consented to a ViziLite TBlue exam. Lesion was visible under ViziLite illumination. The lesion was then swabbed with TBlue and it retained the dye.

**Treatment/Diagnosis:**

Patient was referred to an oral surgeon for evaluation and was found to have squamous cell cancer. The patient was successfully treated by the oncology team. Patient fully recovered with no ill effects.

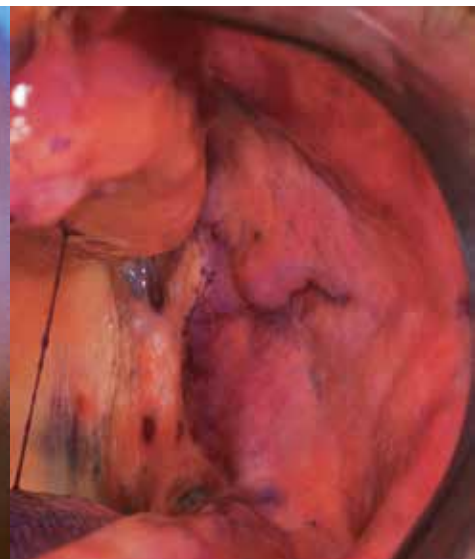
When detected early, oral cancer is 90% curable and patients can live a healthy life. However, more than half of oral cancers have already spread when the cancer is detected.\*



Appearance of Lesion in Incandescent Light



Under ViziLite Illumination



Marked with TBlue



# ViziLite<sup>®</sup> TBlue<sup>®</sup>

Because early detection may save lives.