

## CASE STUDY

# Carcinoma in *situ*

**Patient:** 47-year-old male, non-smoker

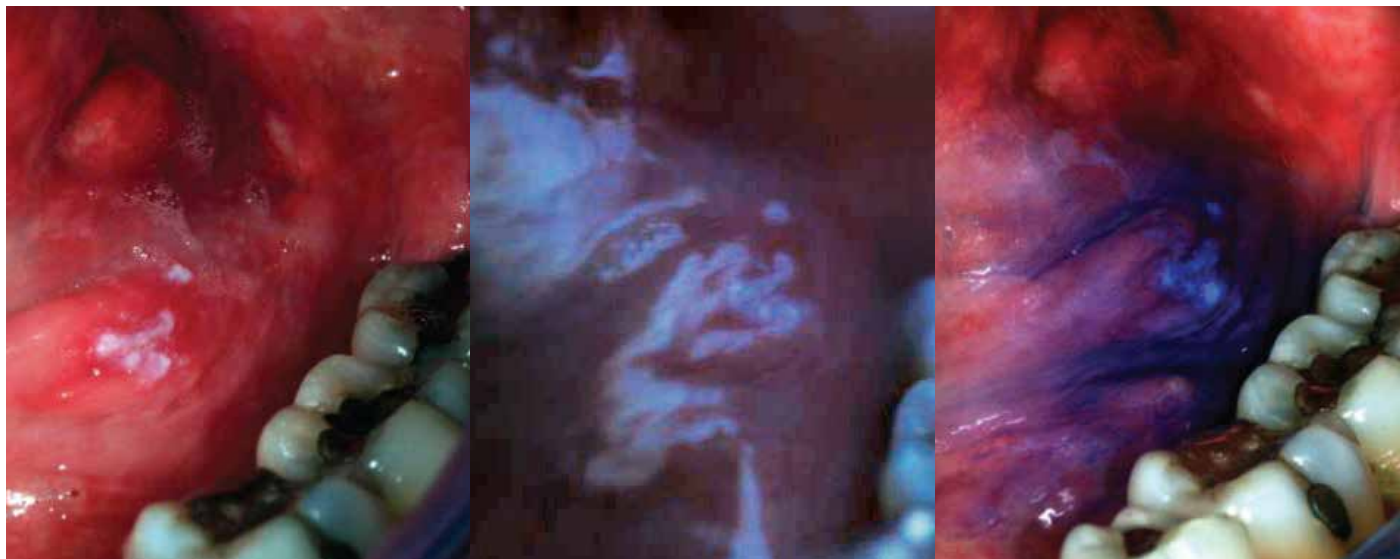
**Situation:**

After prophylaxis, the patient consented to a ViziLite TBlue exam. Lesion was visible under ViziLite illumination. Lesion was stained with TBlue, and the lesion absorbed the stain.

**Treatment/Diagnosis:**

Patient was found to have Carcinoma in situ and was referred to an oral surgeon for removal of the lesion. Patient had a non-eventful recovery.

ViziLite TBlue is the only FDA-cleared medical device to include TBlue, which can be used to qualify lesions after identification with chemiluminescent illumination.



Appearance of Lesion in Incandescent Light

Under ViziLite Illumination

Marked with TBlue



# ViziLite<sup>®</sup> TBlue

Because early detection may save lives